



ラルル

Lulle

Heat & Cold Therapy Pack

Technology from **JAPAN**



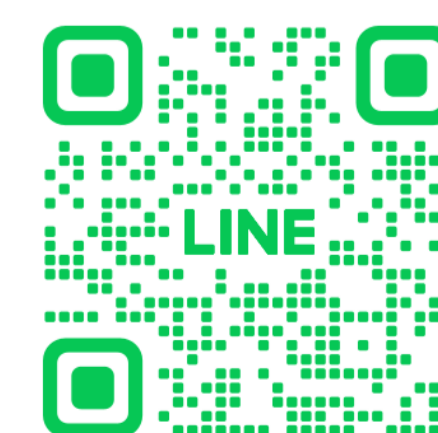
0940651409



<https://www.thaiolba.com/>



info@thaiolba.com



AD License No. 1482/2569

BR-LUL2026EN-Rev01

Sunflower Bean-Shaped Hot & Cool Pack

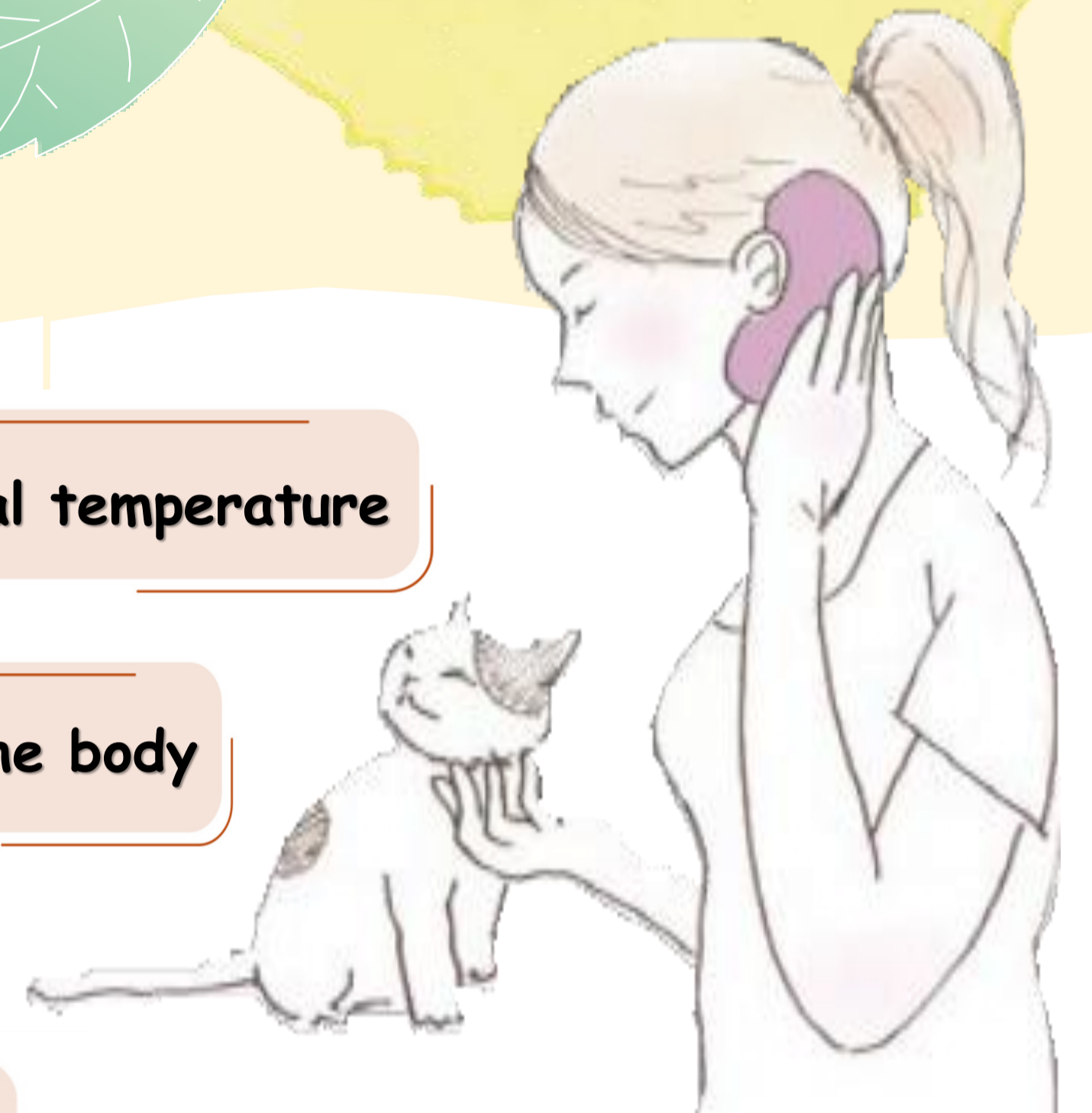


**Sherbet
Gel**

Designed to fit
comfortably on the
chest and lymph nodes

Maintains optimal temperature

Fits snugly to the body



Gentle warmth to the body and behind the ears
for relaxation and sleep well

Doubles as an eye mask

Insert the gel pack into the cotton cover



Notice the warning on the label and accompanying documents before use.



The cover: purple and gray

How to prepare:

Cold: Place the gel pack in a freezer for at least 3 hours.

Hot: Heat the gel pack in a 500-600 watt microwave for 30 sec.



Balloon Flower

Intimate Hot & Cool Pack

Intimate

Hot & Cool Pack

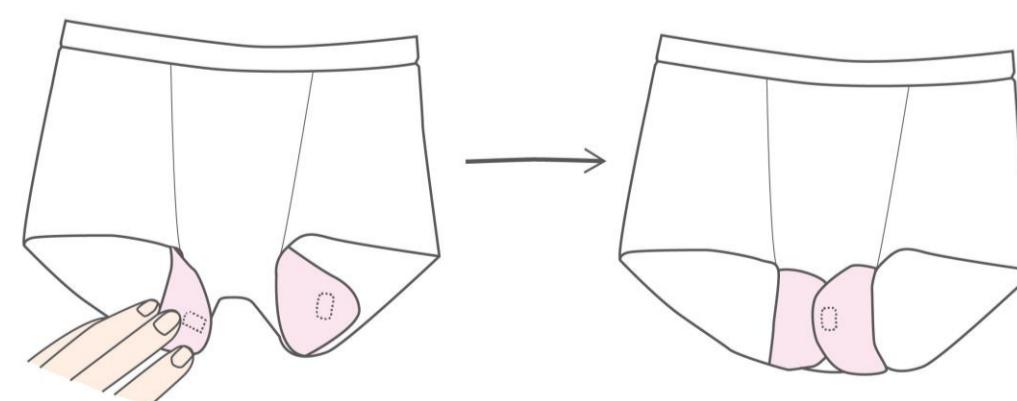
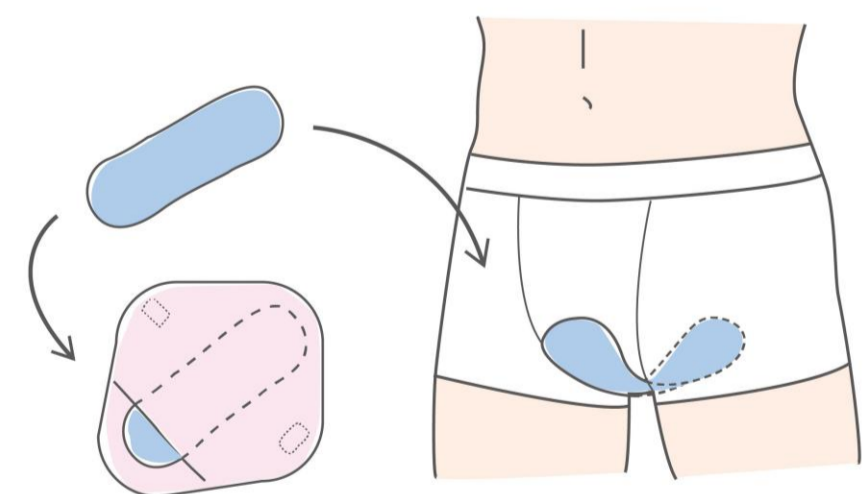
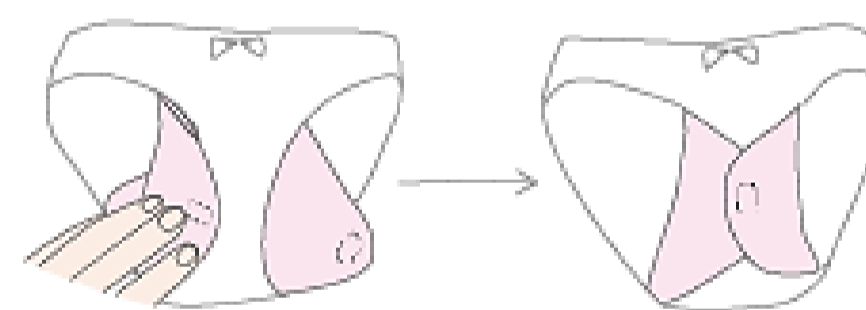
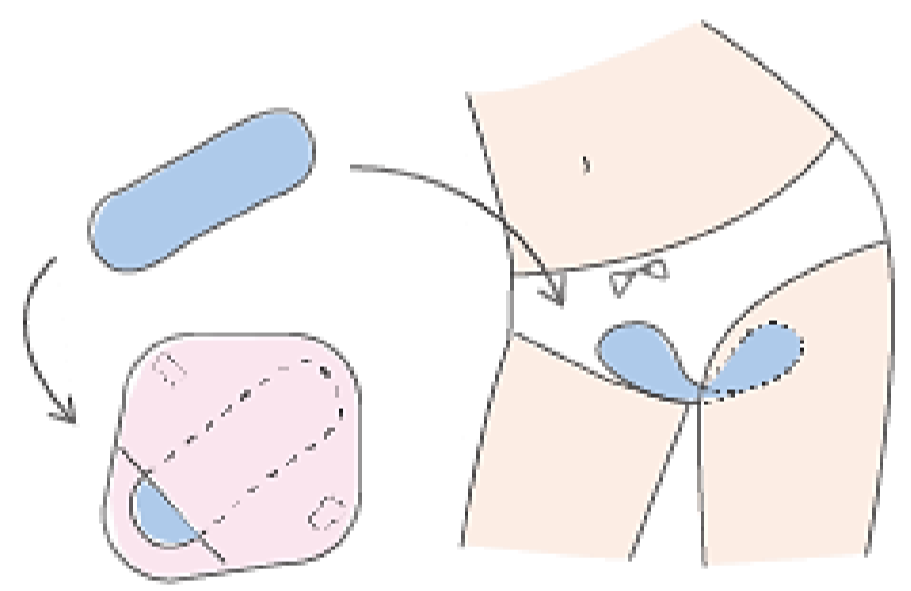


How to prepare:

Cold: Place the gel pack in a freezer for at least 3 hours.

Hot: Heat the gel pack in a 500-600 watt microwave for 20 sec.

Insert the gel pack into the cotton cover



Gentle warmth
to the uterine
area

Relieve
menstrual
cramps

Reduce pain
from postpartum
vaginal wounds or
hemorrhoids



The cover : purple and gray

Notice the warning on the label and accompanying documents before use.



ラルル Lulle

Listing notification No. 69-2-3-2-0000628

Main Components:

- **Film:** Nylon, polyethylene
- **Gel Contents:** Water, CMC, anti-freezing agent, control agent, preservative, colorant
- **Cover:** Cotton



Lulle Sunflower

Product Model	Weight (g)	Size (mm)	Colors
Lul-002	120	W90×H185	Purple
			Gray



Lulle Ballon Flower

Product Model	Weight (g)	Size (mm)	Colors
Lul-003	90	W70×H180	Purple
			Gray

Importer: **THAI OLBA HEALTHCARE CO., Ltd.**
 131, Moo 9, Innovation Cluster 1, Room INC1-114,
 Khlong Nueng, Khlong Luang, Pathum Thani 12120 Thailand
 Tel (+66) 94-065-1409 , (+66) 94 059 9485
<https://www.thaiolba.com/>

Manufacturer: **Mie Chemical Industry Co., Ltd.**
 255-1 Okuchi-chou Matsusaka-city Mie 515-0001 Japan
 TEL (0598) 51-2361 (代) FAX (0598) 51-1143
<http://www.miekagaku.co.jp>

How to use

